

Guest house Villa Kapellmatt



Vitznau, Central CH, Switzerland, 438m
14 beds, from CHF 60.00

Holidays with friends - Villa Kapellmatt is located directly on Lake Lucerne in Vitznau. The beautiful garden with deckchairs invites you to linger. Those who want to be sporty can make trips on the lake with the SUPs or canoes. The villa offers a holiday flat for 6 people as well as 4 double rooms (140cm beds) with a common room, including crockery, microwave, coffee machine and fridge for breakfast or lunch. French breakfast is included in the double rooms.

Details

rooms & facilities

accommodation

Total 14 spaces to sleep

holiday flat am See (6 spaces to sleep):

- 1 room with 1 double bed
- 1 room with 2 beds
- 1 room with 1 sofa bed for 2 people

Room Klewenalp (2 spaces to sleep):

- 1 room with 1 double bed (140cm)

Room Kapellmatt (2 spaces to sleep):

- 1 room with 2 beds (each 90 x 200cm)

Room Stanserhorn (2 spaces to sleep):

- 1 room with 1 double bed (140cm)

Room Bürgenstock (2 spaces to sleep):

- 1 room with 2 beds (each 90 x 200cm)

bedding

- bed linen - available
- towels - available

facilities

- 1 common room - for the 4 double rooms, with crockery, coffee machine, microwave, wine glasses and fridge

holiday flat am See:

- 1 dining room
- 1 Living room
- 1 balcony

furnishings & equipment

kitchen equipment

holiday flat am See:

1 Refrigerator
Crockery (for 6 persons)
1 Dishwasher
1 Electric cooker
1 Kettle
1 Coffee machine

Room Klewenalp:

not suitable for self-catering

Room Kapellmatt:

not suitable for self-catering

Room Stanserhorn:

not suitable for self-catering

Room Bürgenstock:

not suitable for self-catering

sanitary facilities

1 bathroom with bath tub, sink and WC - 1 shared bathroom for the 4 double rooms

holiday flat am See:

1 bathroom with bath tub, sink and WC

Features

1 Patio
1 Barbecue
1 Washing machine (with costs)
1 Tumble dryer (with costs)
Internet/WLAN

holiday flat am See:

Hairdryer

Activities

skiing resort

Rigi

The Rigi is a great place to escape the fog.
She offers 9 runway kilometres, 4 sledge runs and many winterhiking trails.

Altitude valley:	1315m
Altitude mountain:	1800m
Number of lifts:	8
Ski runs:	9km

Klewenalp Stockhütte

The skiing area is located next to the motorway A2 Basel-Chiasso, 15 minutes away from Lucerne.
While skiing, you can see the Lake Lucerne.

Altitude valley:	435m
Altitude mountain:	2001m
Number of lifts:	13
Ski runs:	40km

shopping facility

in the village/city
next to the house - Fresh coffee, sweet drinks, beer, wine and other specialities can be bought in the in-house organic shop.

outdoor swimming-pool	next to the house
restaurant	in the village/city
hiking	
lake or river	next to the house - Lake Lucerne
other activities	next to the house - SUPs or canoes can be hired from the house

Costs

all information without guarantee

all year

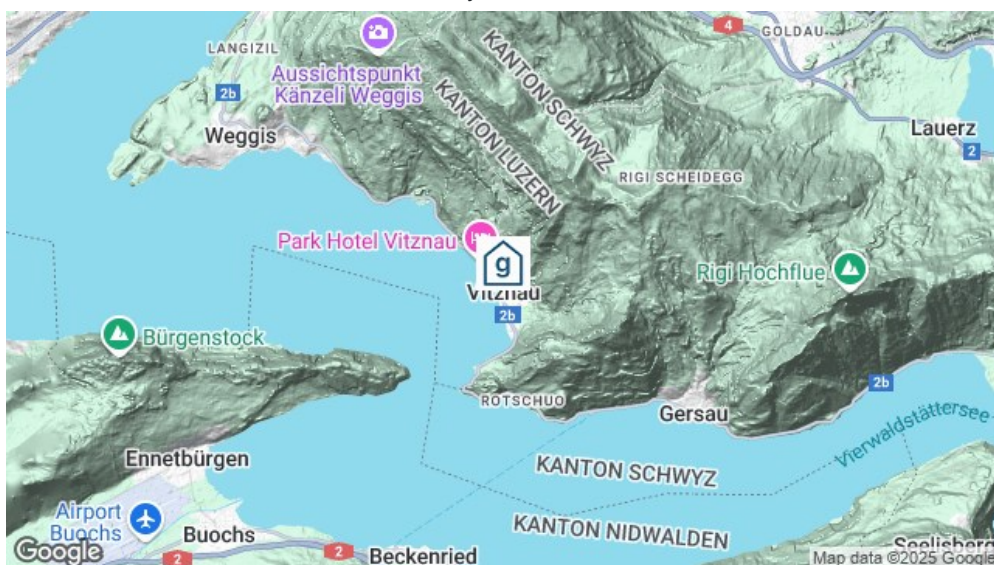
Groups up to 14 people	Price per night
	Single room: from CHF 60.00
	Double room: from CHF 68.00
	Holiday flat: from CHF 160.00
	Whole house: from CHF 500.00

minimum occupation	3 nights
	Holiday flat high season: 7 nights

other costs	Tourist tax: not included
	Electricity/hot water: included
	House cleaning: included

Location

location of the house	- near lake / river
	- Shops close by
	- close to skiing area
	- central
	- Direct access by car - all year
	- Direct access by car



Reachability

nearest town/village	Vitznau
public transport	by bus to Vitznau, Station - 3 minutes walking distance to the house
by car/by coach	by car - driving up to the house possible (Chargeable public parking spaces directly behind the house or various car parks in the village)

Inquire now without obligation

https://www.gruppenhaus.ch/en/inquiry_form/guest_house/villa_kapellmatt/1336

gruppenhaus.ch
Samstagerstrasse 20, 8832 Wollerau

+41 62 961 3334
vermittlung@gruppenhaus.ch

03/04/2025 The accuracy of information provided in this document, can not be guarantee.